

COLT

Colt Caloris ^{WRF}

Climate Control



WRF COLT CALORIS - PERFORMANCE INDOOR UNIT

	Size 1	Size 2	Size 3	Size 4
--	--------	--------	--------	--------

Cooling Performance @ 25 °C, RH 50%, Water 20/26 °C

Cooling Capacity	1508 W	2230 W	3360 W	4770 W
Compressor Power Input	316 W	442 W	652 W	871 W
COP Compressor Input Only	4.77	5.05	5.15	5.48
Unit COP (according to EN 255-2)	4.11	4.21	4.65	4.72

	Size 1	Size 2	Size 3	Size 4
--	--------	--------	--------	--------

Heating Performance @ 20 °C, Water 20/15 °C

Heating Capacity	1510 W	2350 W	3370 W	4135 W
Compressor Power Input	374 W	543 W	696 W	948 W
COP Compressor Input Only	4.04	4.33	4.84	4.36
Unit COP (according to EN 255-2)	3.55	3.72	4.29	3.80

Air Side Heat Exchanger

Model / Type	3/8" Curved Cu - tube with shaped aluminium fins			
Air Qty (speed 1) m ³ /h (l/s)	150/42	175/49	215/60	595/165
Air Qty (speed 2) m ³ /h (l/s)	180/50	260/72	445/124	800/223
Air Qty (speed 3) m ³ /h (l/s)	225/62	350/97	705/196	1230/342
Air Qty (speed 4) m ³ /h (l/s)	260/72	440/122	940/261	1465/407
Standard Static Pressure	30 Pa	30 Pa	30 Pa	30 Pa
Maximum Static Pressure	50 Pa	50 Pa	50 Pa	70 Pa

Water Side Heat Exchanger

Model / Type	Finned and Grooved Spiral Shell-in-tube			
Water Connections	15mm	15mm	15mm	15mm
Water - Minimum Flow l/s (l/min)	0.074 (4.5)	0.106 (6.4)	0.133 (8.0)	0.178 (10.7)
Waterside - Differential Pressure	1.0 kPa	1.5 kPa	2.0 kPa	5.0 kPa
Waterside - Max Pressure	20 bar	20 bar	20 bar	20 bar
Water Capacity	2.4 L	2.4 L	2.8 L	3.3 L

Noise Data (at standard power and speed)

Sound Power (SWL)	45 dB(A)	49.5 dB(A)	51 dB(A)	50.5 dB(A)
Typical Lp	28-33 dB(A)	32-37 dB(A)	33-38 dB(A)	31-36 dB(A)
Typical N R	23-28 dB(A)	26-32 dB(A)	27-32 dB(A)	25-30 dB(A)

Heat Pump

Compressor Type	Low Noise Cradle Hermetic Horizontal Rotary/scroll			
HCFC - Free Refrigerant	R134a	R407C	R410A	R410A
Refrigerant Quantity	0.395 kg	0.75 kg	0.75 kg	1.015 kg

Dimensions & Weights

	Dim A	Dim B	Unit Weight	Spigot Options
Unit Size 1	820	776	72 kg	1,2
Unit Size 2	980	936	80 kg	1,2,3
Unit Size 3	1280	1236	88 kg	1,2,3,4
Unit Size 4	1580	1536	108 kg	1,2,3,4,5

Electrical Data

Power Supply (V / ph / Hz)	230/1/50	230/1/50	230/1/50	230/1/50
Total Absorbed Power @ 30°C	0.5 kW	0.7 kW	0.8 kW	1.2 kW
Nominal Current Compressor/Fan	1.9 / 0.25 A	2.8 / 0.4 A	3.4 / 0.5 A	5.0 / 0.5 A
Max Starting Current	16 A	16 A	16 A	19 A
Minimum External/Internal Fuse	7 A	7 A	7 A	10 A
Max No. Units off 13 Amp Supply	4	3	2	2

† Digital controls only

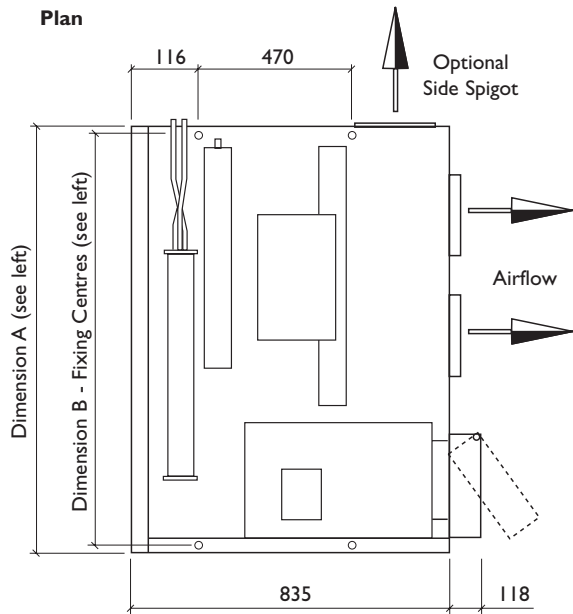
Acoustical data are based on the report of Peutz & Associés BV (NL) and SRL Limited (UK) in accordance with EN ISO 3741:1999, EN ISO 5135:1999, BS 4856:1997 and Eurovent 8/2 1992. Sound pressure levels are based on measurements taken in a reverberation chamber with a half second echo and 8-4 kg/m² ceiling mass.

Performance data has been measured in a EN 14511-certified laboratory.

As with all heat pumps water flow is critical: It is essential to ensure that all flow rates are within CIBSE guidelines (w), ie 0% tolerance for underflow, 10% tolerance for overflow.

0% tolerance for underflow
10% tolerance for overflow

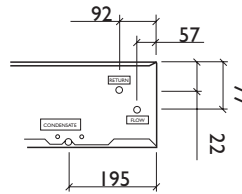
WRF COLT CALORIS - DIMENSIONS INDOOR UNIT



Side view



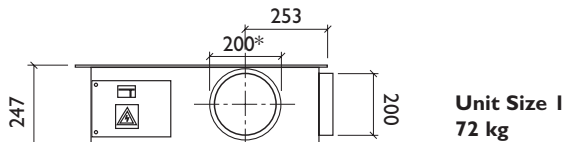
Water Connections



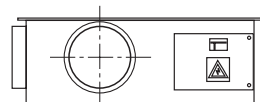
15mm diameter copper tails
 Outlet - (Return)
 Inlet - (Flow)

15mm diameter stainless steel
 Drain - (Condensate)

Left Handed



Right Handed (Size 1 only)



Standard spigot diameter is 200mm (sizes 1-4)

*250mm diameter spigots are also available on request

A condensate pump is also optional.

